

Buzzin' Around

KIM SCHAEFER



Buzzin' Around Quilt
designed by
Kim Schaefer
Quilt Size: **62" x 62"**
andoverfabrics.com

About Buzzin' Around

Whimsical butterflies intermingle with cute ladybugs and beetles in this adorable new collection by Kim Schaefer. This collection is filled with sweet little critters! Chock full of terrific coordinating prints in beautiful colors, this collection calls to mind a summer picnic on a perfect day in June.

andover

•
•
• [makower uk](http://makower.uk)
•

Free Pattern Download Available

1384 Broadway New York, NY 10018
Tel. (800) 223-5678 • andoverfabrics.com

Buzzin' Around Quilt



Introducing Andover Fabrics new collection: **BUZZIN' AROUND** by Kim Schaefer
 Quilt designed by Kim Schaefer

Quilt finishes 62" x 62"

13 Block Y: 8" x 8"

12 Block Z: 8" x 8"

What fun to identify these stylized critters on a quilt sure to please! Bright and colorful and the perfect size for napping under, the quilt is made with the bug novelty print as the focus. Easy-to-piece borders surround the creepy-crawlies and flying insects.

Cutting Directions

Note: Read assembly directions before cutting patches. All measurements are cut sizes and include 1/4" seam allowances. A fat 1/8 is a 9" x 20"-22" cut of fabric. A fat 1/4 is an 18" x 20"-22" cut. Borders are cut the exact lengths required plus 1/4" seam allowances. WOF designates the width of fabric from selvedge to selvedge (approximately 42" wide).

Fabric A Fussy-cut (25) squares 5 1/2" (read Step 1)

Fabric B Fussy-cut (4) squares 3 1/2"
 (center a large butterfly in each)

Fabric C Cut (6) strips 3 1/2" x WOF, pieced to make the following:
 (4) borders 3 1/2" x 50 1/2"

Fabric D Fussy-cut (4) squares 3 1/2"

Fabric E Cut (5) strips 2 1/2" x WOF, pieced to make the following:
 (2) top/bottom borders 2 1/2" x 50 1/2"
 (2) side borders 2 1/2" x 46 1/2"

Fabric F Cut (24) strips 2" x 8 1/2"
 Cut (24) strips 2" x 5 1/2"

Fabric G Cut (26) strips 2" x 8 1/2"
 Cut (26) strips 2" x 5 1/2"

Fabric H Cut (6) strips 3 1/2" x WOF, pieced to make the following:
 (2) top/bottom borders 3 1/2" x 62 1/2"
 (2) side borders 3 1/2" x 56 1/2"

Fabric I Cut (7) strips 2 1/2" x WOF for binding

12 Prints From each:
 Cut (6-7) rectangles 2 1/2" x 3 1/2" (80 total)

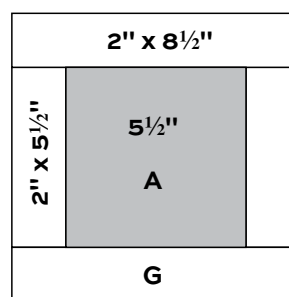
Backing Cut (2) panels 40" x 78", pieced to fit quilt top with overlap on all sides

Fabric Requirements

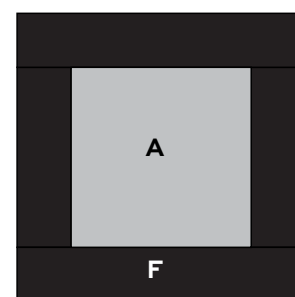
		Yardage	Fabric
Fabric A	blocks	1 panel (2/3 yard)	9380-L
Fabric B	corner squares	fat 1/8 yard	9381-O
Fabric C	border	3/4 yard	9381-T
Fabric D	corner squares	fat 1/8 yard	9383-G
Fabric E	border	1/2 yard	9383-Y
Fabric F	block frames	3/4 yard	9384-K
Fabric G	block frames	3/4 yard	9384-L
Fabric H	border	3/4 yard	9384-X
Fabric I	binding	5/8 yard	8537-K
12 Prints	border	fat 1/8 yard each	
		9382-E	9382-G 9382-T 9382-Y
		9385-E	9385-G *9385-O 9385-T
		9386-E	9386-G 9386-O 9386-T
Backing		4 yards	9385-O

Making the Quilt

- When cutting the Fabric A squares, center each insect and be sure the printed "frame" is even all around the creature. Referring to the Block Y and Block Z diagrams, sew G or F strips to each A square. Make 13 Block Y and 12 Block Z.



Block Y – Make 13



Block Z – Make 12

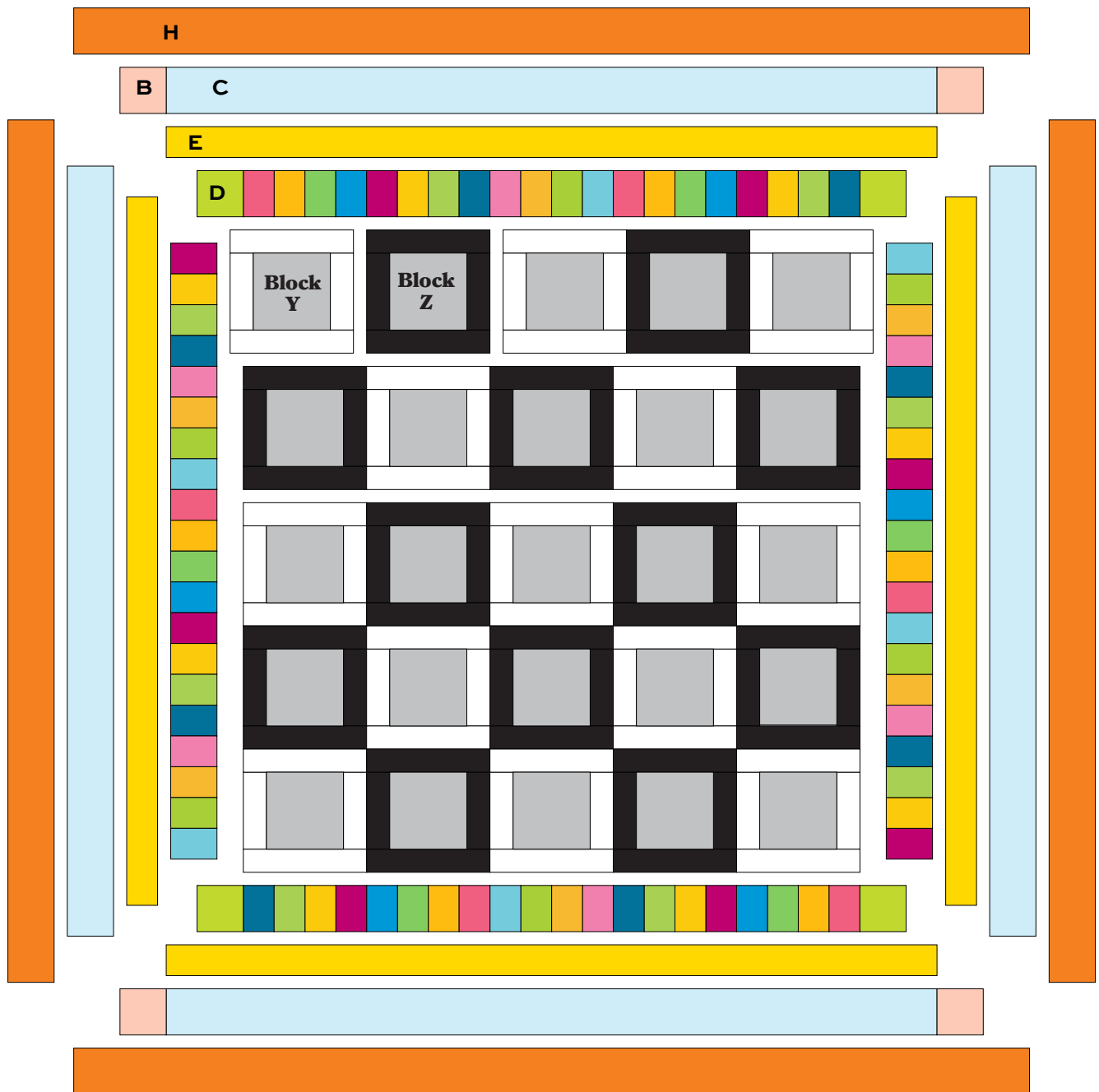
- Referring to the Quilt Diagram, arrange the blocks alternately as shown to make 5 horizontal rows of 5 blocks each. Once you are satisfied with the arrangement, join the blocks into rows, and then join the rows.
- Join 20 rectangles from the 12 prints to make a pieced border. Repeat to make 4 borders. Sew 2 of the borders to opposite sides of the quilt. Join Fabric D squares to ends of remaining borders. Sew to the top and bottom.

Buzzin' Around Quilt

4. Sew Fabric E borders to the sides and then to the top and bottom.
5. Sew 2 Fabric C borders to sides of the quilt. Join Fabric B squares to ends of remaining Fabric C borders. Sew to the top and bottom.
6. Join Fabric H borders to the quilt.

Finishing the Quilt

7. Layer the quilt with batting and backing and baste. Quilt in the ditch around borders and block patches. Quilt around the printed motifs in the blocks. Bind to finish the quilt.



Quilt Diagram

Buzzin' Around

KIM SCHAEFER



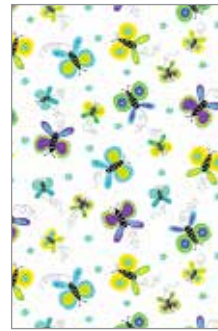
9380-K



9380-L*



9381-O*



9381-T*



9383-G*



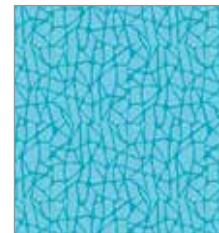
9383-Y*



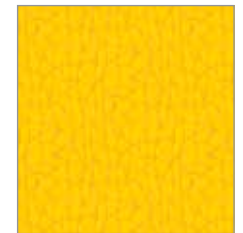
9382-E*



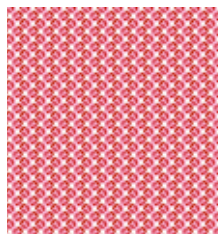
9382-G*



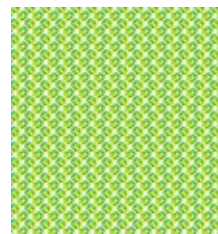
9382-T*



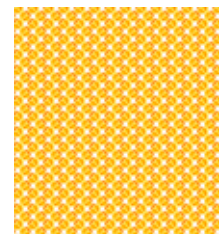
9382-Y*



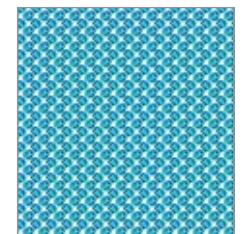
9385-E*



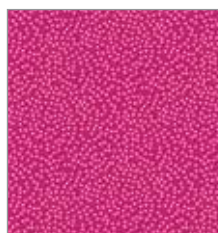
9385-G*



9385-O*



9385-T*



93*86-E



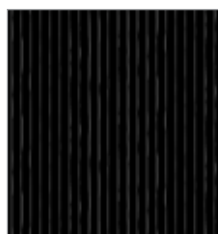
9386-G*



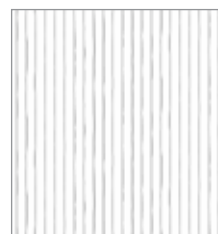
9386-O*



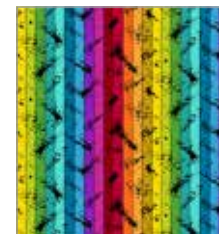
9386-T*



9384-K*



9384-L*



9384-X*



8537-K*

All fabrics are used in quilt pattern. Fabrics shown are 10% of actual size.

Free Pattern Download Available

1384 Broadway New York, NY 10018
Tel. (800) 223-5678 • andoverfabrics.com

andover • makower uk